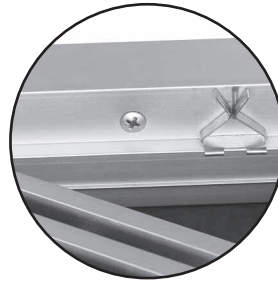
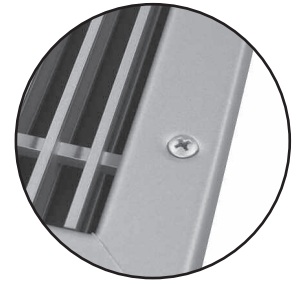


APPLICABLE MODELS:

- All Airline Aluminum Bar Grilles with #6 (1-1/4") Border.
- B Mounting - Screw heads are concealed and frame is installed by removing core and installing screws through the holes in the neck of the grille.
- C Mounting - Countersunk screw holes in the border / face of the grille. (For #9 (1") Border with C Mounting, contact factory)
- If pre-drilling holes into mounting surface, use grille as a template to insure location accuracy.
- For In-between sizes, use the next larger dimension.



B MOUNTING

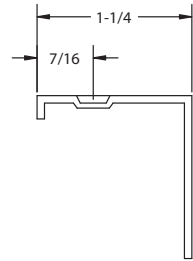


C MOUNTING

Notes: Hole locations are based on longer and shorter dimensions, and are independent of width x height.

CHART 1: HOLE ARRANGEMENTS

		LONG DIMENSION, INCHES						
		6 - 14	16 - 22	24 - 28	30 - 56	58-72	74-96	98 - 120
SHORT DIMENSION, INCHES	2.00	A	B	C	E	G	J	L
	4.00							
	6.00							
	8.00							
	10.00							
	12.00	B	D	F	H	K	M	
	14.00							
	16.00							
	18.00							
	20.00							
	22.00							



Reference

AL

CHART 2: LOCATION/QUANTITY OF HOLES

